

2021 ANNUAL REPORT Community First

HURON
ISLANDS

BIG BAY

ISHPEMING
NEGAUNEE

MARQUETTE

GWINN

“The Foundation is really about people’s ideas and what they are interested in supporting. It’s a good place for the growth of those ideas and those funds.”

— Tom Vear
Chair, Board of Trustees
Community Foundation of Marquette County



(906) 226-7666 • www.cfofmc.org • info@cfofmc.org
P.O. Box 37, 228 W. Washington St., Suite 6
Marquette, MI 49855



Community Foundation
OF MARQUETTE COUNTY

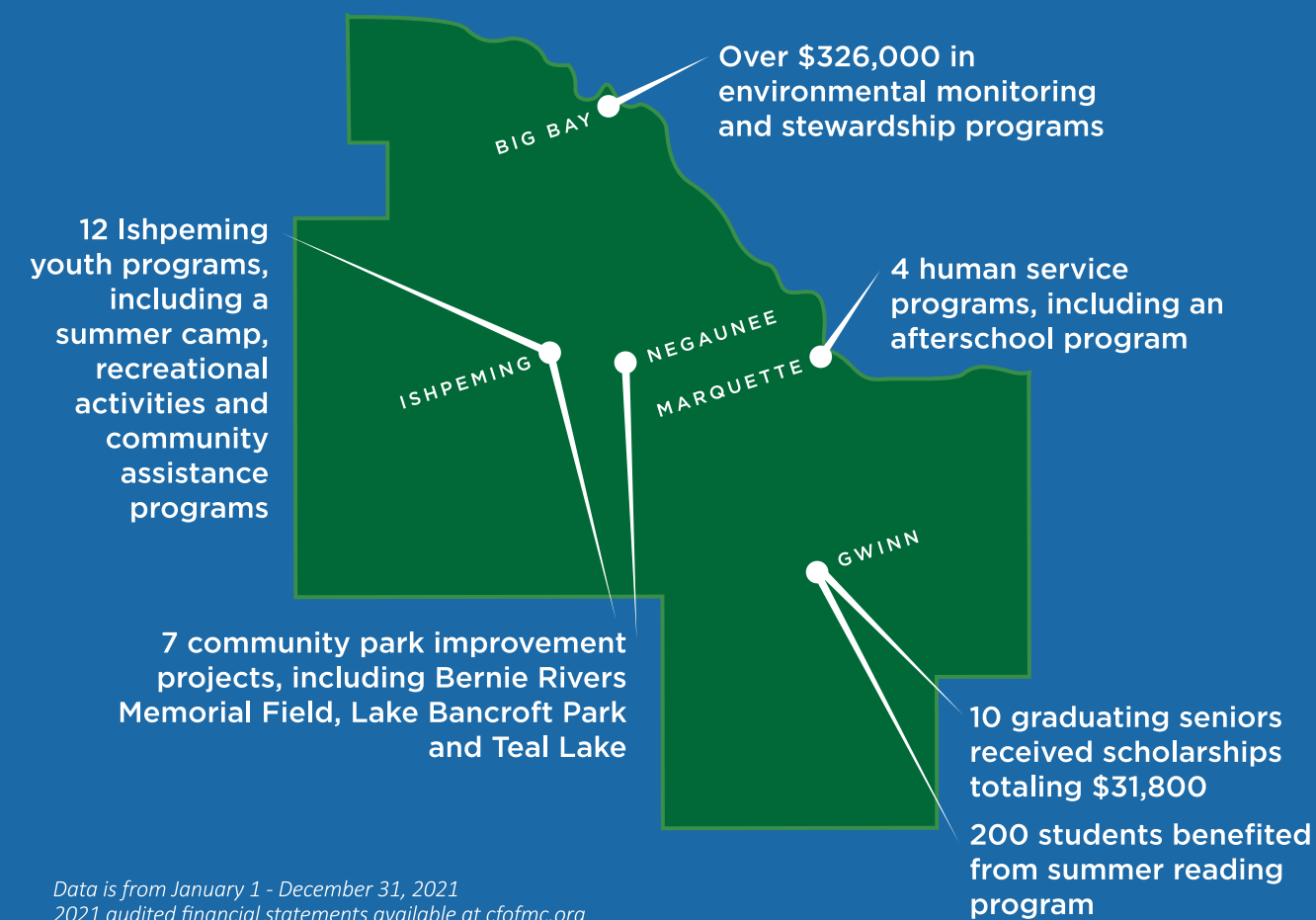
COMMUNITY IMPACT At a Glance

\$24.9 million
in community assets

\$11.6 million
in grants and scholarships in since 1988

OVER \$1 million in grants awarded in 2021 to support education, the environment and human services

With support from Community Foundation funds:



Our mission is to enrich the lives of all people in Marquette County by:

- Connecting donors with community needs
- Building permanent funds for charitable giving
- Distributing scholarships and grants
- Leading and collaborating to address community opportunities

Welcome



"There is no power for change greater than a community discovering what it cares about."

– Margaret J. Wheatley

Dear Partners and Friends,

Since 1988, the Community Foundation of Marquette County has dedicated itself to strengthening the community and improving the lives of all people in Marquette County. We invest in our community's future by building endowments, distributing grants and scholarships, and collaborating with our local partners to address community needs.

Our work is guided by one core value: **Community First**. When we look at the map of Marquette County, we think about all the good things that have happened here, thanks to you. With the community's generous support, the Foundation's assets have grown to more than \$24 million to date. Because of our donors' generosity, in 2021 alone, we supported local agencies and programs with more than \$1 million in grant funding. And through collaborative efforts such as Jumpstart a Heart and Playground for All, we continue to learn what our community cares about.

As we share our 2021 Annual Report with you, we also reflect on what our Board of Trustees and volunteers have helped us accomplish. Thanks to their commitment, service and leadership, we continue to look forward and create positive change in people's lives. The strength of our organization lies in the community itself and in its boundless generosity.

Thank you for trusting the Community Foundation as your philanthropic partner. We are honored to work with you for a thriving Marquette County . . . **For good. For ever.**

Sincerely,

Tom Vear, Chair

Zosia Eppensteiner, CEO

Board of Trustees

Officers



Tom Vear
CHAIR

Jack Lenten
VICE CHAIR

Tom Blake
TREASURER

Maura Davenport
SECRETARY

Mark Canale

Trish Davis

Bob Eslinger

Anne Giroux

Marcia Gonstead

Lisa Jahnke

Alex Kofsky

Lowell Larson

Don Mourand

Sally Searle

Judy Vonck

Susan Goodkind Wideman



A grant from the Negaunee Area Community Fund made it possible for **Lakeview Elementary School** to purchase **25 new ukuleles** for its fourth graders. During a four-month “ukulele unit,” students learned to care for their instruments and play chords and melodies, along with developing an understanding of basic music theory concepts. During the unit, they also developed “practice perseverance” and patience — with themselves and their classmates! On the last day of class, the students presented a concert, performing songs like “A Million Dreams” from *The Greatest Showman*.

Teacher Emily Fitzpatrick says, “[The] ukuleles proved to be a great source of joy for the students as well as a wonderful tool for teaching musical concepts that will launch them into future musical endeavors.” She adds, “Thank you, Community Foundation, for making our ukulele supply at Lakeview complete. I am so proud to be able to say that every single one of my fourth-grade students has their own ukulele to play.”

Affiliate Funds

For more than 25 years, the Community Foundation of Marquette County has supported geographically-based affiliate funds. These funds bring together local leaders who understand community needs and local philanthropic opportunities. The Community Foundation manages the assets while the advisory committees from each community review grant proposals and recommend funding.

Greater Ishpeming Area Community Fund

Anne Giroux, Chair
 Kristen Thornton, Vice-Chair
 Kathy Dellangelo, Secretary
 Shannon Edmark, YAC Advisor
 Ginny Graybill

Jim Kippola
 Gary Nelson
 Heidi Peterson
 Ruth Warner

Gwinn Area Community Fund

John Maki, Chair
 Mark Breit
 Dee Carter
 Jamie Gollakner
 Heather Jackson
 Jeanette Maki

Lynn Rodgers
 Sally Searle
 Jill Paris
 Mike Prokopowicz
 Brian Veale

Negaunee Area Community Fund

Jack Lenten, Chair
 Dawn Adams, Vice-Chair
 Mary Sholander, Treasurer
 Jeremy Hosking, Secretary
 Judy Hallgren
 Amanda Kerry
 Marybeth Kurtz

Connie Lori
 Peter Munson
 Gene Pellinen
 Brian Peterson
 George Sedlacek
 Susan Goodkind Wideman

Marquette Area Community Fund

Judy Vonck, Chair
 Trish Davis
 Lisa Jahnke

Staff



Zosia Eppensteiner
CHIEF EXECUTIVE OFFICER

Jo Ann Dollard
COMMUNITY & DONOR ENGAGEMENT ASSOCIATE

Emma Schultz
PROGRAM ASSOCIATE

Bea Steeland
ADMINISTRATIVE & FINANCE ASSISTANT

Katie Buhmann
NMU INTERN

FUNDING The Future

Endowed funds are at the heart of what we do: They connect donors and their philanthropic goals with the nonprofits that make a difference for people in our community.

Unrestricted Funds

The donor places no restrictions on how these funds are utilized, leaving discretion to the Community Foundation of Marquette County Board of Trustees. The Grants Committee evaluates grant requests and makes recommendations to best meet community needs.

C. John Peterson Family Fund
Cary and Sharon Bjork Family Fund
Community Advised Big Bay Fund
Fund For Marquette
Gail Anthony Endowment
Greater Ishpeming Area Community Fund
Greater Ishpeming Area Community Fund – Operating
Gwinn Area Community Fund

Gwinn Area Community Fund – Operating
Marquette Area Community Fund – Operating
Negaunee Area Community Fund – Operating
Negaunee Community Fund
Pam Benton Memorial
Raymond J. Jason Memorial Fund
Robert & Lottie Clark Fund
Rod and Holly Aldrich Family Fund

Field of Interest Funds

The donor specifies a purpose or an area of interest to which the funds are distributed. The Foundation awards grants from these funds to address identified needs within those areas.

Adult Amateur Arts, Music, and Culture Fund
Arts Fund
Community Environmental Monitoring Program
Community Response Quasi-Endowed Fund
Education Enhancement Fund For Marquette
Area Public Schools Elementary Students
Elderly Fund
Exchange Club of Marquette Fund
Fred & June Schaefer Legacy Fund for
Persons with Special Needs
George W. Romney Fund
Greater Ishpeming Area Community
Fund - Operating Endowment
Gwinn Area Community Fund - Operating Endowment
Health and Wellness Fund
Helen Campbell Schillinger Youth Music Fund
Homelessness Prevention Endowment
Johanna Pohjala Fund for Weavers

Negaunee Area Community
Fund - Operating Endowment
Negaunee Lions Community Enrichment Fund
Negaunee Public Schools Enrichment Fund
Operating Endowment
Our Common Future
Paul F. Blewett Legacy Fund B
Paul F. Blewett Legacy Fund C
Range Bank Clean Energy Fund
Seavoy Family Fund
Statewide Equity Fund Grant
Stephen Blondeau Memorial Fund
Unsung Heroes Fund
William and Mildred Andrews Youth Fund
Youth Fund for Greater Ishpeming Area
Youth Fund for Marquette
Youth Fund For Negaunee Community Fund
Zonta Club Fund

Designated Funds

The donor identifies specific charities or special projects to receive grant funds, and Foundation staff manage annual distributions.

Aniket Dhadphale Marquette Junior Hockey
Designated Fund
Bernadette Reider UPAWS Fund
Bernadette Reider's St. Christopher Catholic
Church Designated Fund
Charles and Lois Smith IHS Sports Endowment
Charles E. Ryan, Jr. Memorial Fund
Clark Lambros Beach Park Fund
Eagle Mine Technical Middle College Endowment Fund
Excellence in Education Endowment Fund
Great Lakes Education Designated Fund
Gwinn Area Community Schools and Brian Watson
Excellence in Education Day Endowment Fund
Jumpstart a Heart Endowment Fund

Jumpstart a Heart - AEDs for Marquette County Law
Enforcement Administrator's Association
Kids Cove Endowment Fund
Marquette County Emergency Cleaning Fund
Marquette Regional History Center Designated Fund
Martha Konster Christensen Youth Ministry Fund
Norman and Dolores Jacobson Family Music
Endowment Fund
Playground for All - A DREAM to Build a New ALL
INCLUSIVE Kids Cove Playground
Robert Eric Daniel Soderberg Fund
Sisters of St. Paul De Chartres Designated Fund
Snyder Drug Fund for the Benefit of Bay Cliff

The Johanna Pohjala Fund for Weavers, a field of interest fund, was established in 2003 by her daughter, Christine Simonen, in memory of her mother. The purpose of the fund is to create opportunities for fiber artists and fiber arts education in Marquette County.

“It was my mother’s wish to perpetuate the art of Finnish rag rug weaving,” says Christine. “She began weaving rag rugs on the loom her father had made for her mother. For more than 50 years, she explored many patterns and color variations, always with excellent craftsmanship. **This is her way to share her joy of this art form with future generations.**”



*Johanna Pohjala working on her loom, in 1954.
Photo courtesy of Christine Simonen*

FUNDING The Future

Agency Funds

Non-profit organizations establish agency endowment funds to provide funding for the future.

Big Brothers Big Sisters Agency Fund
City Gift Program Endowment
City of Marquette Skate Plaza Endowment
Great Lakes Center for Youth Development
Great Lakes Center for Youth Development
Technical Assistance Fund
Ishpeming School District Alumni Agency Fund
Ishpeming School District Educational Fund
Marquette County Fair Fund
Marquette County Health Department
Fund-Dental Clinic
Marquette Junior Hockey Fund
Marquette Symphony Orchestra Fund
Medical Care Access Coalition, Inc.
Minde Glenn Browning Endowment
Peter White Public Library Development Fund

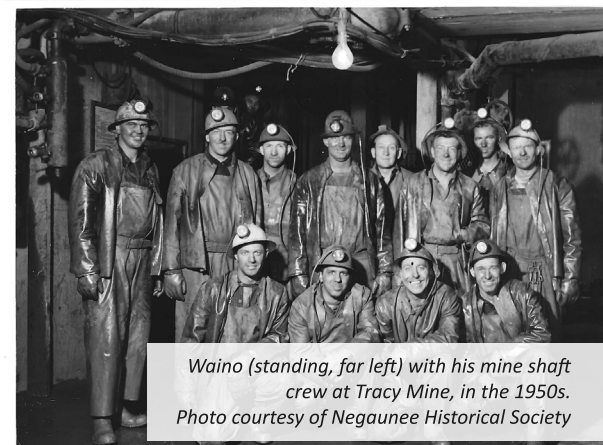
Planned Parenthood of West and Northern Michigan
Powell Township Education Fund
Roman Catholic Diocese of Marquette
Endowment Fund
Superior Watershed Partnership
Teaching Family Homes Fund
United Way of Marquette County Agency
Endowment Fund
Upper Peninsula Animal Welfare Shelter Agency Fund
Upper Peninsula Children's Museum
Upper Peninsula Environmental Coalition
Upper Peninsula Land Conservancy
Stewardship Agency Fund
Women's Center Inc.
YMCA Agency Fund

When you ask people in the community what they remember about **Waino Liuha**, they light up. Waino may have passed in 2013, but his spirit is still alive, continuing to inspire everyone who knew him.

In his 87 years of living, Waino was many things: A miner, husband and father, veteran, union president, social worker, churchgoer, volunteer and raffle-ticket seller. "Waino was always such a giving person. He was always ready to help people," says Dave Hallgren, a friend and fellow Lions Club member.

In 2007, Waino Liuha established the **Waino and Joanne Liuha Scholarship Fund** at the Community Foundation to provide financial assistance to graduating seniors of Negaunee High School.

Zosia Eppensteiner, Community Foundation CEO, says, "**The story of Waino is a story of generosity and community.** Waino valued education, and the establishment of the scholarship fund and the recent generous support through his estate are helping seniors from Negaunee High School continue their education. This fund will grow even more as a resource for students with financial need. Waino's legacy of giving continues."



Waino (standing, far left) with his mine shaft crew at Tracy Mine, in the 1950s.
Photo courtesy of Negaunee Historical Society

Donor Advised Funds

The donor actively participates in the grantmaking process by recommending to the Foundation Board the purpose and/or organization(s) that might receive annual distributions.

Christine Pesola Donor Advised Fund
DellAngelo Family Fund
Emerick Family Fund
Emil and Elizabeth Vajda Charitable Endowment
Holman Family Fund
Huron Mountain Club Donor Advised Fund
Huron Mountain Club Endowment Fund
Janet Haynes and Erin Verigin Fund
Karl Stien and Leah McCabe Fund
Marion C. Vander Veen Family Great Lakes
Education Donor Advised Fund

Mark and Christine Troudt Donor Advised Fund
Martha and Michael Conley Family Fund
Reijo Aho Fund
Robert Cowell and Kathleen Olivier Donor Advised Fund
Rod and Holly Aldrich Donor Advised Fund
Stien Family Fund
TriMedia Foundation Donor Advised Fund
Vonck Family Donor Advised Fund
Nancy E. Wiseman Seminoff Donor Advised Fund

Scholarship Funds

Donors establish these funds to help students achieve educational goals through scholarship awards.

Andy Nault Memorial Scholarship Endowment Fund
Anna L. Tobin Scholarship Endowment Fund
Barbara Hammerberg Memorial Scholarship Fund
Bernadette Reider Scholarship Fund
Bernhardt L. Pederson Scholarship Fund
Betty Holman Memorial Scholarship
Bob Hart/Bill Tuohimaa Memorial Scholarship Fund
Brian Watson Scholarship Fund
Carolyn Lalas Music Scholarship Endowment Fund
Coach Dion Brown Memorial Scholarship
Cohodas Scholarship
Douglas & Elizabeth Larson Scholarship Fund
Dr. E. William & Dorothy A. Sivula Scholarship Fund
Dr. Ray and Mary Johnson Memorial Scholarship
Dr. William "Bee" Sivula Scholarship Fund
Elliot Family Memorial Scholarship Fund
Evergreen Award of Marquette County Scholarship Fund
Father Vincent L. Ouellette Scholarship Endowment Fund
Francine L. Malindzak Scholarship Fund
Frank and Elizabeth Buytaert Memorial Scholarship
Fred Waara Chapter of Trout Unlimited/Cynthia
Kitzman-Fred Waara Memorial Scholarship
George and Jonelle Collins Scholarship
Gerald J. Anderson Scholarship Fund
Gwinn Community Schools Alumni Fund
Henrietta Nardi Scholarship Fund
Hunter Negri Memorial Bowling Scholarship
Independent Order of Odd Fellows
Ishpeming High School Student Citizenship Scholarship
Joan Erickson/Gwinn VFW 5670 & Auxiliary Scholarship Fund
John Basolo NIT Service Scholarship Fund
John M. Croze Memorial Scholarship
Leah Andrews Choral Scholarship Fund
Levine Family Scholarship Fund
Mark Ulrickson Memorial Scholarship Fund

Marquette Senior High School Class of 1977 Scholarship Fund
Mary Beth Lorschbach Scholarship
Matt Davidson Memorial Scholarship
McCormick Harju Scholarship
Meggan Eiben Memorial Scholarship Fund
Metzner Scholarship
Mossimo James Romeli Memorial Scholarship
Endowment Fund
Naval Mobile Construction Battalion 25 Memorial Scholarship
Negaunee Environmental Scholarship Fund
Negaunee Public Schools Citizenship Scholarship Fund
Nelson Family Foundation
NHS Class of 1987 Scholarship Fund
Patricia DeVold Scholarship Fund
Paul W. and Pearl K. Goodman Music Scholarship Fund
Philip A. Spade and Ruth M. Spade Scholarship Fund
Raymond Pajula Scholarship Fund
Richard Murphy/Gwinn VFW 5670 Scholarship Fund
Robert and Mary (Romback) Prudom Negaunee
High School Scholarship
Rudy and Darley Kemppainen Scholarship Fund
Saima Kuivila Education Scholarship Fund
Saima Kuivila Salutatorian Scholarship Fund
Saint Paul's School Commemorative Fund
Schenk Scholarship Legacy Fund
Stuart L. Sundblad Memorial Scholarship Endowment Fund
Sydney W. Northey Scholarship Fund
Tsu Ming and Joy L. Han Scholarship
Valente Family Music and Art
Waino and Joanne Liuha Scholarship Fund
Walter J. Crimmins Scholarship Fund
Westwood High School Scholarship Fund
William and Jean Hocking Memorial Scholarship Fund
William B. Larson Memorial Scholarship

BIG BAY



Partridge Creek Farm is building a healthy, prosperous and empowered community through local food and wellness education. Thanks to a CFMC grant, Partridge Creek hosted **11 community volunteer and educational events** last summer, bringing more than 312 participants together to work and learn, side by side. Thanks to these weekly events, including cooking classes held right in the gardens, 100% of participants reported an increase in confidence about growing and cooking produce.

ISHPEMING
NEGAUNEE



The **Negaunee Beautification Committee** determined that by planting several trees in a neglected area of Bernie Rivers Memorial Field, they could enhance the park's appearance and create some needed shade for the children and families who play there. A Community Foundation grant funded the purchase of several trees. Says Anna Mattson, committee member, **"It may take a village to raise a child, but it also takes a small group of willing people to plant a tree in a park for those children in that village."**



Every year, **Great Lakes Rodeo** organizes **Operation Great Christmas** — a free Christmas dinner for 600 people in the community. A grant from the Gwinn Area Community Fund helped support this labor of community love. Organizer and volunteer Jesie Melchiori says, "Because of our amazing community, we are able to help many of our friends and families enjoy a free Christmas meal, either at home or with us at the Up North Lodge! Each year, our project grows beyond our expectations!"

MARQUETTE

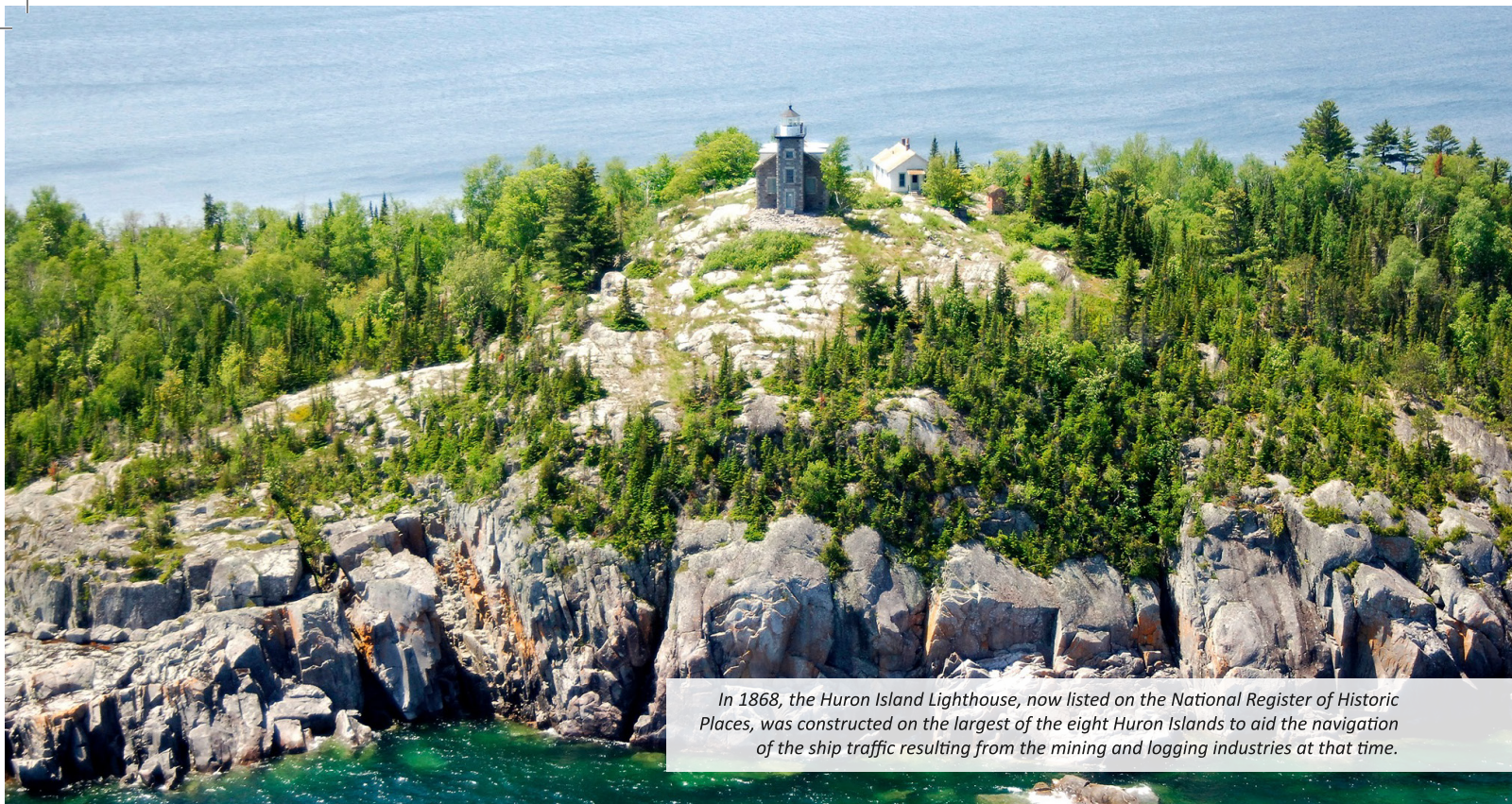


A grant for Hiawatha Music Festival's **"Cultivating our Roots, Traditional Arts Performance, Education and Preservation"** made a wonderful week of traditional music possible in November 2021. The music **"...was a real gift to our extended community,"** says Hiawatha's Terri Bocklund. Steeped in the Appalachian music of Eastern Kentucky, the featured roots band, **Zoe Speaks**, sang, played, entertained and taught at six public events, two school assemblies, and one home school association group, as well as at two interactive concerts at Great Lakes Recovery Centers' inpatient units.



Silver Samplers, a program of the Marquette Senior Center, engages participants 55 and up in outdoor activities around Marquette, including hiking, biking and kayaking. The group helps participants develop skills, knowledge and confidence as they enjoy outdoor adventures. Janet Koistenen, program coordinator and participant says, **"I couldn't be more grateful for and humbled by this group. The Silver Samplers has changed me, has inspired me, has been and will forever be the best thing I've ever done!"**

GWINN



In 1868, the Huron Island Lighthouse, now listed on the National Register of Historic Places, was constructed on the largest of the eight Huron Islands to aid the navigation of the ship traffic resulting from the mining and logging industries at that time.

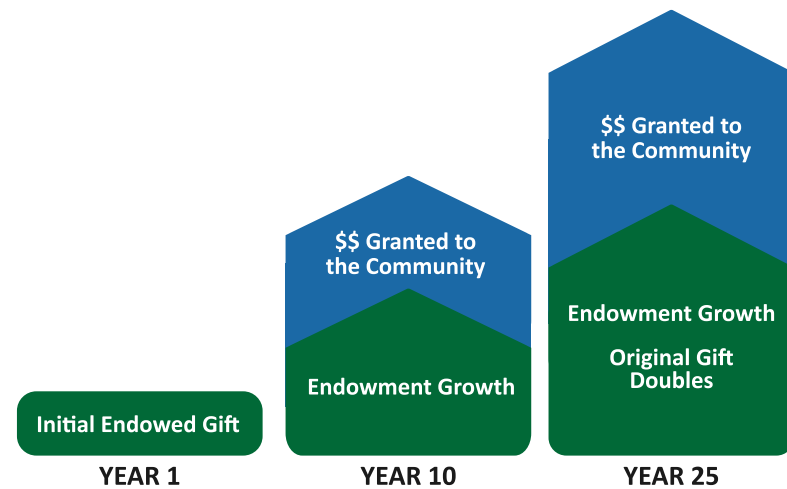
GROWING IMPACT Through Endowed Funds

Endowed gifts to the Community Foundation are invested for long-term growth and impact. Every year, a portion of these funds can be distributed to donors' charitable interests while the fund balance remains invested.

The **Holman Family Fund** — a donor-advised fund — is helping support the ongoing restoration of the Huron Island Lighthouse Station, in Marquette County. **The Huron Island Historic Lighthouse Preservation Association (HILPA)**, in collaboration with the U.S. Fish and Wildlife Service, is spearheading this significant historic preservation project.

Scott Holman says, "I was happy to make a contribution [through the Fund] toward what's going to be an enormous project." Having undertaken the restoration of nearby Granite Island Lighthouse himself years earlier, Scott says, "I knew what they had ahead of them."

Burt Mason, HILPA president, says, "The funding that the Holman Family Fund provided HILPA was a huge help. If it were not for funding and community support, we would have lost another piece of history in the area."



Patti Tourville, Chief Ryan Grim and Officer Jeff Czarny with an AED purchased through the Jumpstart a Heart Campaign, which Patti and her family helped support.

THE POWER OF Collaborative Partnerships

When organizations come together to address community needs in a thoughtful, collaborative way, amazing things can happen. Jumpstart a Heart is a powerful example of that.

The **Jumpstart a Heart** campaign was organized in 2021 by the **Marquette County Law Enforcement Administrators and Association (MCLEAA)** and the Community Foundation of Marquette County to replace the automatic external defibrillators (AEDs) for law enforcement units across the county.

Some Jumpstart a Heart donors, including Patti Tourville, were inspired to give to the campaign because someone they loved experienced a heart attack and they wanted to help save people's lives in the future. Earlier this year, Tourville asked to meet with some local officers who would be using the AEDs funded through the campaign, including the one funded by her family in memory of her sister-in-law, Sharon Rose Parish.

The successful effort raised more than \$107,000 to purchase 43 new AEDs and two trainer units. Supported by many individuals, business and funders, the campaign not only addressed the immediate need for equipment replacement, but also established the **Jumpstart a Heart AEDs Fund** to support this cause in the future.

ADDRESSING Community Needs

Our grant cycle supports nonprofit organizations — wherever the need is greatest.



From left, Emma Schultz, Community Foundation program associate and Marquette Youth Advisory Committee advisor; Marquette YAC members Katie Tripp, Matthew Tripp, Ezra Pickard, Maya Lackey, Romy Kus; and Jenna Zdunek, Marquette County YMCA CEO.

In 2021, the **Youth Fund for Marquette** and **Fund for Marquette** invested in youth development by supporting the purchase of padded blocks, shapes and mats for the **YMCA's Kids Gym**.

In January 2021, **Marquette Youth Advisory Committee (YAC) members** made a site visit to the YMCA to see what their 2021 grant helped accomplish. Jenna Zdunek, YMCA of Marquette County CEO, showed the youth around the gym, which she describes as **“one of the most beloved spaces for youth in Marquette County.”**

The Youth Advisory Committees at the Community Foundation are made up of 6th - 12th graders from our community, with groups in Ishpeming, Negaunee and Marquette. Through their involvement with grantmaking, YAC members are exposed to the power of philanthropy. Along with developing an understanding of community needs, they have an opportunity to actively address some of those needs.

MARQUETTE AREA COMMUNITY FUND

8-18 Media
Big Brothers Big Sisters
Camp New Day U.P.
City of Marquette Marquette Senior Center
Da Upper Yoopers' Barbershop Chorus
Feeding America West Michigan
Girl Scouts of the Northwestern Great Lakes, Inc.
Grow & Lead: Community and Youth Development
Hiawatha Music Non-Profit Corp
Janzen House
Lake Superior Hospice Association
Lake Superior Village
Marquette Lions Club
MCLEAA
Michigan 4-H Foundation
MSHS Robotics
Music For All Kids

New Free Store
North Star Academy
Planned Parenthood of Michigan
Propylon Non-Profit Housing Corp.
Room at the Inn
Silver Creek Church
St. Anthony's Church
Start the Cycle
Superior Arts Youth Theater
Superior String Alliance, Inc
Superior Watershed Partnership and Land Trust
The American Red Cross
Trillium House
United Way of Marquette County
Upper Peninsula Children's Museum
Willow Farm Therapeutic Riding
YMCA of Marquette County

The Marquette Area Community Fund awarded more than \$62,280 in grants.

Let's Grow K.I.! (LGKI) is a non-profit created to plant the seeds for a healthier and more self-sustaining community through gardening, nutritional education and community action in K.I. Sawyer, the decommissioned Air Force Base in Gwin. K.I. Sawyer's current population is 2,624 people, with 36% of the unincorporated community living in poverty and not having local access to affordable, fresh produce.

With support from the Gwin Area Community Fund, Let's Grow K.I.'s 2021 pilot program enrolled and supplied five K.I. Sawyer families who qualified for SNAP (Supplemental Nutrition Assistance Program), with the tools, knowledge and confidence to grow nutritious food in their own backyard. LGKI coordinated workshops with instructors from Michigan State University's Cooperative Extension Service, Northern Michigan University, the Queen City Seed Library and other organizations.



Alden Griffus, NMU's executive chef, came out to K.I. Sawyer to present a cooking demo, showing participants ways to use up leftover vegetables.

GWINN AREA COMMUNITY FUND

906 Community Church
Forsyth Township Public Library

Great Lakes Rodeo of Michigan
Grow & Lead: Community and Youth Development

The Gwin Area Community Fund awarded more than \$3,130 in grants.

GREATER ISHPEMING AREA COMMUNITY FUND

Hope Free Evangelical Lutheran Church
Ishpeming Rotary - The Ishpeming Faire Committee
Kiwanis Club of Ishpeming
Cliffs Shaft Mine Museum
Michigamme Township Downtown Development Authority

Partridge Creek Farm INC.
Superior Shore Systems, Inc.
UP Disc Golf Association
Wesley United Methodist Church

The Greater Ishpeming Area Community Fund awarded more than \$13,900 in grants.

NEGAUNEE AREA COMMUNITY FUND

City of Negaunee
Historic Vista Theater/Peninsula Arts Appreciation Council
Lakeview Elementary School
Marquette County Habitat for Humanity, Inc.

MCLEAA
Negaunee Beautification Committee
Negaunee Public Schools

The Negaunee Area Community Fund awarded more than \$20,722 in grants.

CELEBRATING Community Catalysts

Every year, the Community Foundation's Catalyst Awards celebrate the efforts of people who build community through volunteerism or philanthropy and inspire others to do the same. The following Catalyst Award recipients were recognized at the Community Foundation's 2021 Annual Celebration.

Henry Chittle, Youth Honoree

At 9, Henry is already an asset to his community. **He looks for opportunities to help others**, and he does so in creative and effective ways — from selling his own artwork to support UPAWS, to running a lemonade stand to raise funds for the Care Clinic. In his acceptance speech, Henry said, "I didn't know there was an award for this. I just like doing fundraisers and raising money for things that need money, like food banks and stuff."



Double Trouble Entertainment, Business Honoree

Bill and Pat Digneit, owners of Double Trouble Entertainment, moved to Marquette to attend Northern Michigan University and have called the U.P. home ever since. **"If you take care of your community, your community will take care of you"** is the Digneit's motto. It is evident, by the way that Bill and Pat run their businesses, that they are committed not only to their own success but also to the success of many local nonprofits, including Lake Superior Hospice, NMU, Beacon House and Boy Scouts and Girl Scouts.

Spread Goodness Day, Service Club/Organization Honoree

Inspired by her love of volunteerism, founder **Anna Dravland** wanted to encourage others to support their communities in their own unique ways. Proclaimed an official annual holiday by the City of Marquette and State of Michigan, Spread Goodness Day, held on March 12, **inspires countless individuals, groups, businesses and organizations to do exactly that — through acts of goodness and kindness.**



Jesie Melchiori, Individual Honoree

Along with being the general manager of the Up North Lodge, in Gwinn, Jesie is president of the Great Lake Rodeo, board member of the Alger County Fair, and campaign chairperson of Gwinn School's Booster Club. Community Foundation Trustee Lisa Jahnke says, "Each Christmas season, Jesie takes on **Operation Great Christmas**, providing holiday meals to hundreds of families. Jesie believes that it takes a village to accomplish all she's done, she's proud to be a part of the Gwinn Community and the Gwinn Community is so thrilled that's she's part of theirs."



LEAVING A Lasting Legacy

Our Legacy Society recognizes the donors who have made provisions in their estate plans to give back to the community through the Community Foundation. These gifts take the form of bequests which name the Community Foundation in a will or trust, charitable remainder trust, gifts of life insurance, or any other type of charitable planned gift. We are grateful for their dedication, philanthropic spirit, and foresight to recognize the importance of making a future gift through the Community Foundation.

Susan G. Boback
Stu and Bonnie Bradley
Brad Canale
Mark Canale
Michael and Emily Coyne
Susan Schenk Drobny
Barbara Hammerberg
Lynne and Carl Hammerstrom
Greg and Joann van Hartesvelt
Nheena Ittner
John and Pauline Kiltinen

John E. Maki
Don and Barbara Mourand
Kathryn Mueller
Al Nelson
Bob Cowell and Kathleen Oliver
Christine Pesola
Mike and Joanne Roy
Ken and Tami Seavoy
Mark and Christine Troutd
James Wagner

WITH GRATITUDE For Our Donors' Generosity

Anonymous
44North
A B
William Adams and Mary Carter Denny
Lorna Addison
Advanced Center for Orthopedics
AHWC Development Inc
Holly Aldrich
Alger Delta Electric Cooperative Association
Kaye Allen
Amazon Smile Foundation
Ameriprise Financial Services, Inc.
Carolyn Anderson
Anderson, Tackman & Company, P.L.C.
Marilyn and R. Norman Andrew
Mike and Kay Angeli Jr.
Bob and Gail Anthony
Sallie Arens
Argonics, Inc.
Jean Armour
Thomas Armour
Daniel and Constance Arnold
Artisan Real Estate Group
Luke Backus
Brian Baker

Mark Balhorn
Kay Bammert
Kristy Basolo-Malmsten
Elizabeth Bates
Virginia Bath
Gary Bath
Mark Beckman
Kristina Behrens
Leslie Bek
Bell Financial Services
Peter and Jocelyn Belpedio
David Bennett
Timothy and Dianne Bennett
Bennett Media Group
George and Martha Bermingham
John Bermingham Jr.
Nicholas Berry
Kathryn Berry AIA
Robert and Rebecca Berube
Beth Millner Jewelry
David Bingham
Cary Bjork
Blue Cross Blue Shield of Michigan
Foundation
Julianne Bockius

Evan Bonsall
Katie Bonzer
Donna Booth
Edward and Emily Bothfeld
Joseph and Margaret Boyle
Stuart and Bonnie Bradley
Broadridge
Roger and Mary Brooks
Andy Brown
Timothy Brown and Jill Riddle
Ken and Linda Bullock
Betsy Burmeister Watson
George and Nancy Buth
Michele Butler
Elizabeth Calcutt
James Campbell
Brad Canale
Mark Canale
Canale Family Fund
Canale Tonella Funeral Home Inc.
Aubrey and Chuck Carey
Pam Carl
John Case
Allan Chandler
Edward Chandler

Laura Chandler
Robertson Chandler
Susan and Allan Chandler
Bob Chapman
Wayne Chen
Marie Chilman
Bliss Clark
Pamela Clark
Cleveland Cliffs Inc.
Kent Clow III
Lois Cohodas
George Cole
Barb Coleman
Jonelle Collins
Michael and Martha Conley
William Connor
Richard and Kathleen Copes
Robert Cowell and Kathleen Olivier
Joyce Croze
Natalie Culley
Tiffany Cunningham
Rick Custard
Sharon Daanen
Becky Dale
Steve Dale
Maura and Ken Davenport
Trish and Steve Davis
Patrick de Freitas
Dead River Coffee
Serin DH Decherd
Chris Degabriele
Robert and Kathy DellAngelo
Cindy Delmet
Mari Denby
R. Breck Denny
Spencer Depree
Sandra DeVold
Prakash and Alka Dhadphale
Frederick Dick
John Dick
Craig Dickson
Laura Dickson
Linda Dickson
Sarah Dickson
Orville Dishno Jr.
Lindsey Dionne
John Dixon
Donckers LLC
Kris Dosh
Double Trouble Entertainment
M.A. Duer and Cathy Brumm
Eugenia Dunn
Michele Dupras
Henry Dykema
John and Bibi Dykema Jr.
Eagle Mine
Thomas and Shannon Edmark
Edward Jones
Earl and Jean Eliason
Embers Credit Union
Toni Eppensteiner
Zosia Eppensteiner
Bob and Sandy Eslinger
Essential Chiropractic
Karen Farm
Edie Farwell
John and Linda Sue Farwell
Mary Farwell
James Fegan
Cathy Ferguson
Fidelity Charitable
Buffie Finkel
First Bank
Flagstar Bank
Jo Foley

Isabel Francis
Rachel Franzese
Darlene and William Frazier
Frazier Fund, Inc.
Fred Waara Chapter of Trout Unlimited
Peter and Pamela Gadzinski
Anthony Gagliardi
Harvey and Patty Gagnon
Pamela Gale
Jacqueline and James Gallagher
James and Gail Gaston
GFamily6, LLC
Jeff and Joanne Gibitz
Diane Giddens
Rick Gilles
Anne and Jeffrey Giroux
John and Tracy Goble
Laura and Richard Goodney
Grand Rapids Community Foundation
Virginia Graybill
Greater Ishpeming Area Community Fund
Ronald and Rosalind Greenlee
Grow & Lead: Community and Youth
Development
Betsy Grugin
Cheryl Gustafson
Gwinn Area Community Fund
Gwinn Lions Club
Meg Hackett
Edward Haffner
David and Judy Hallgren
David Hallinen
Barbara Hammerberg
Margaret Harris
Amy and James Harwood
Earl Hawn
Suzanne and Norman Hefke
Joseph Heidelberger
Heron Foundation
Guillermo Herrera
Christopher Hewat
James and Melissa Hewitt
Sharon Hickey
Charles Hill
Ron Hill
Ruth Hill
J. Marc and Rene Himes
Hinterland Advisors - Ameriprise Financial
Services, LLC
Judith Hintsala
Michael Hocking
Alex Hodges
James Hodges
Charles Hodges IV
Joy Holman
Karen Holmgren
Joyce Holstein Emmons
Honor Credit Union
Seth Houston
Susan D.F. Houston
Sandra Howes
Carolyn Hume
Fred Hume
Tom and Beth Humphrey
Huron Mountain Club
Incredible Bank
Innovate Marquette SmartZone
Henry Isham
Pamela Isham Clute
Nheena Ittner
Dolores Jacobson
Lisa and Dan Jahnke
Jamieson Orthodoxotics
JM Longyear, LLC
Bari Johnson

Jeannie and John Johnson
Lee Johnson
Alfred and Mary Ann Joyal
Andrea Judd
Dorothy Kahler
Jamee Kane
David Karnes
Jesper Ke
Ronald and Marilyn Keefe
Kendricks, Bordeau, Keefe, Seavoy, Larsen, P.C.
G. Peter Kelly
Keith and Vada Kepler
James and Kathleen Keplinger
Ellen King
Christina Kleinpaste
Diane Kordich
Susan Kornfield
Allan Koskey
Karen Koskey
Cindy and Peter Kotila
John Kublin
Jerry and Peggy Kulbieda
Robert Kulisheck
James and Rosemary Kutchie
Beverly and Bernie Kylma
Andrew Labadie
Lois LaBrecque
Kevin LaBumbard
Gloria LaFave
Lake Superior Press
Jill LaMere
Andy Langlois and Stephanie Zadroga-Langlois
Annette Larson
Lowell and Pearl Larson
Michael Lasich
Marian Laughlin
James Lawrence
Virginia Lawrence
Mary Ledyard
Thomas and Susan LeGalley
Paul and ZZ Lehmborg
John Lenten
Mary Letts
Scott Lindberg
Alec Lindsay and Katherine Teeter
Carolynn and Jack Loacker
Barrett Ludlow
Jessica Lunt
Mary Waterman and Bill Lunt
M.J. VanDamme, Inc.
Makela, Toutant, Hill, Nardi & Katona, P.C.
Jeanette and Donald Maki
John Maki
Margi and John Mallo
Bill and Barbara Manierre
Samantha Manierre Kofler
MAPS Education Foundation
MARESA
Cheryl and Robert Marietti
Mark and Julie Aho Family Foundation
Lois Massie
Marquette Breakfast Rotary
Marquette County Police & Firefighters Fund
Marquette Downtown Development
Authority
Marquette Food Co-op
Marquette West Rotary Club
Lee Marshall
David and Jacalyn Martin
Anna Mattson
Brian and Dolores Mattson
Miles and Nancy Mattson
Mary Lou Mauro
Frederick and Kathy Maynard Jr.
Dan and Connie Mazzuchi

Pamela McClelland
James McClelland III
Ann McCormick
Helen E. McCormick
Jody and Thomas McCormick
Timothy and Susan McCormick
James and Patricia McCormick
Theodore McGraw
Jean McLean and Timothy Trowbridge
Russel McMillan
James McMillan II
Sallye Miyara
Colin McNaughton
Susan McPhee
Adam Mienhennick
Karen Merckx
J. Conley and Charlotte D. Meredith
Lynne Mestnik
Meyer Yamaha, Inc
Carol and Mike Mileski
Joan and Don Miller
Miners State Bank
MK Enterprises, Inc.
Chuck and Mary Moore
Robert Morcom and Gail Mattson
Mary Jane Moll
Don and Barbara Mourand
Maryrose and Gordon Moyle
Kathryn Mueller
Meagan Murphy
Martin Murray
Mary Jo Murray
Robert and Carolyn Myers Jr.
Negaunee Area Community Fund
Michael Neiger
Alan Nelson
Nancy Nelson
Steve Nelson
Network for Good
Nicolet Bank
G. Michael Nidiffer
Susan and Thomas Noren
Northern Michigan University
Northland Chapel Gardens
Harriet Nowell
James and Nancy Nowell
Nyquist Convenience Stores
Elinor Ogden
Katherine Opat
Jill Paris
Ellen Parkkonen
Gene and Bonnie Pellinen
Wendy Peltto
Gregg Pestana
James Phelps
Heather Picotte
Lori Piggott
Pike Distributors
Michael Prokopowicz and Catherine Kroll
Sandra and Mike Prusi
Rees Pugh
William Purves
Deanne and Scott Pynnonen
Mark Pynnonen
Elizabeth Pyott
Sheila Pyott
R.L. Balconi
Range Bank
C. B. and Radha Rao
Stacey Rasanen
Ray & Peg Hirvonen Charitable Foundation
Raymond James Charitable
Linda Reidy
Alexandra Reimelt
Jessica Reimelt

Kathy Reimelt
Douglas Rhode
Andrew Riemann
Samuel Rinaker III
Fred Roberts
Janet Roberts
Lynn and Steven Rodgers
Seth Rowles
Michael and Joanne Roy
Erik Roys
Jon Ruuska
RTI Surgical
Arthur Saari
Sandra and Donald Salo
Sanders & Czapski Associates, PLLC
Schmidt Community Fund
Laurie Schon
Schwab Charitable
Deborah Scully
Kathleen Scutchfield
Tami and Kenneth Seavoy
Nancy Wiseman Seminoff
William Seppanen
Michelle Shaffer
Anne Sheret
William and Rita Short
Audra Shropshire
Howard Simpson
Paula and Paul Sirois
Bodil and Milton Soderberg
Judy and Duane Soine
Steve and Ruth Solinski
Matthew and Laura Songer
Laura Stackhouse
Robert Stackhouse
Standard Motor Products, Inc
Seth and Rachel Stankowski
James and Betty Steward
Craig Stien
Sarah Stoker
Mary and Douglas Stone
Joyce Strasser
Judge H. David Sullivan and Ann Soet
Superior Alliance for Independent Living
Superior Extrusion, Inc
Superior Health Foundation
Superior Watershed Partnership and Land Trust
Lynn and Christine Swadley
Swadley Development, LLC
Crystal Swanson
Swanson Family Trust
Fred and Kristy Taccolini
Mary Tackett
Tailored CPAS, P.C.
Target Corporation
Dorothy Taylor
The Delft
The Power Foundation
The Shiras Institute
The Up North Lodge
Lucas Theys
David Thomson
Paul Thomson
Thrivent Financial
Marilyn Tobin
Breck Tonella
Tourville Foundation
Towner's Pastry Shoppe
Paul Townsend
Martin and Mary Jane Tremethick
Mark and Christine Troutt
John and Phyllis Trudeau
Trudell Plumbing and Heating, Inc.
Alan and Marlys Trudgeon
Arthur Turner

Edward Turner
James Turner
Priscilla Turner
Scott Turner
Richard Turner Jr.
Claire Twohey
United Way of Marquette County
UP Engineers and Architects
UP Home Health & Hospice
UP Rehab Services LLC
Upper Peninsula Health Plan LLC
Upper Peninsula Power Company
Nancy Uschold and Mike Stoolmiller
Daniel and Jenna Vainner
Matt Vanni
VAST
K Vogel
Judy and Mick Vonck
Ray and Mary Vonck
Cheryl and Joseph Vukelich
David Wagstaff
Waino Liuha Trust
Paul Wainio
Chip Walklet
Donn Walklet
Tracy Walklet
Walmart
Judith Walsh
Dean and Nancy Warlin
Hadley Washburne
Stephen Washburne
Thomas Washburne Jr.
Fran Waters
Watling Foundation, Inc.
John and Beverly Watling III
Brian Weatherdon and Martha Short
John and Mary Weber
Wells Fargo Bank
West End Health Foundation
Terri Williams
Joan Williams
Katherine Williamson
Linda Winslow
Gail Zanetti
Gary Zanetti
Diane and Arnold Zueger
Gregory Zybur